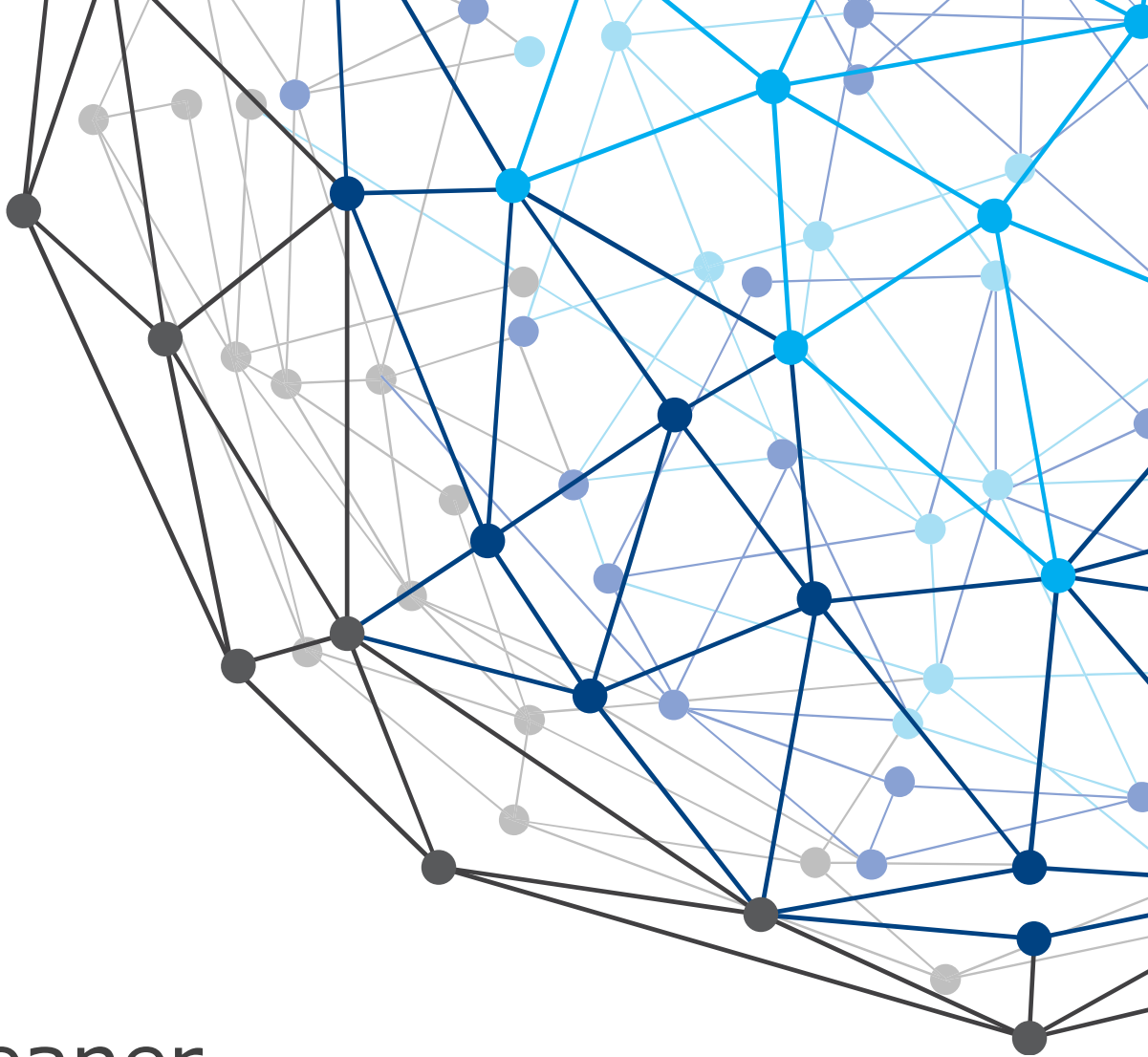




One-Click™ Cleaner

10th/Mar/2023
JSAA-12-23-0035

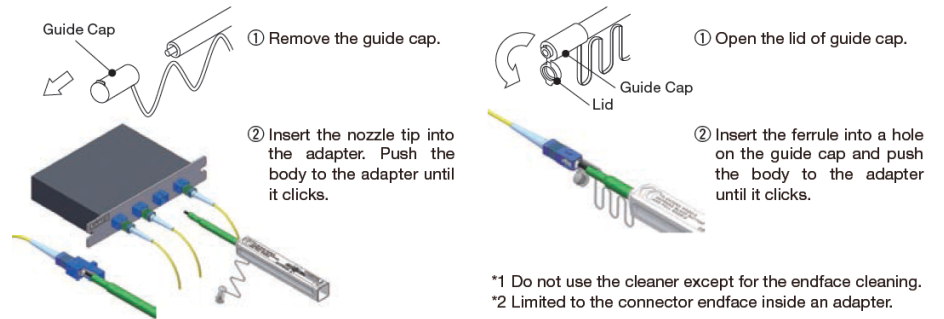


One-Click Cleaner



One-Click Cleaner SC

- ✓ 光コネクタのフェルール端面に付着したゴミや油分をワンプッシュで除去
- ✓ ガイドキャップを使用して、プラグやレセプタクルのフェルール端面を清掃
- ✓ 端面汚れの清掃により、伝送エラーや端面損傷を防止
- ✓ ワンクリック可能で、簡単作業
- ✓ EU/95/2002/EC (RoHS)指令準拠



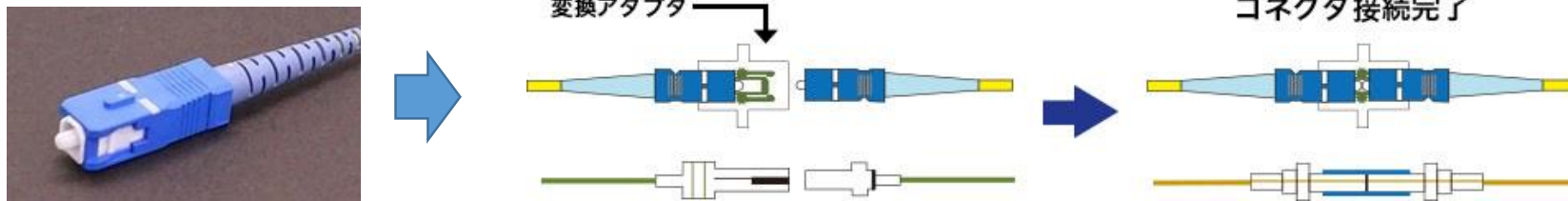
- Points
 1. Insert the cleaner tip into the adapter or connector on jumpers straight and vertically, and then push it.
 2. Push it slowly and gently.
 3. Do not push it after hearing the click sound. Take it out gently and backward.
 4. Do not squeeze it into the adapter or connector.

光ファイバ接続方法

融着接続



メカニカル接続

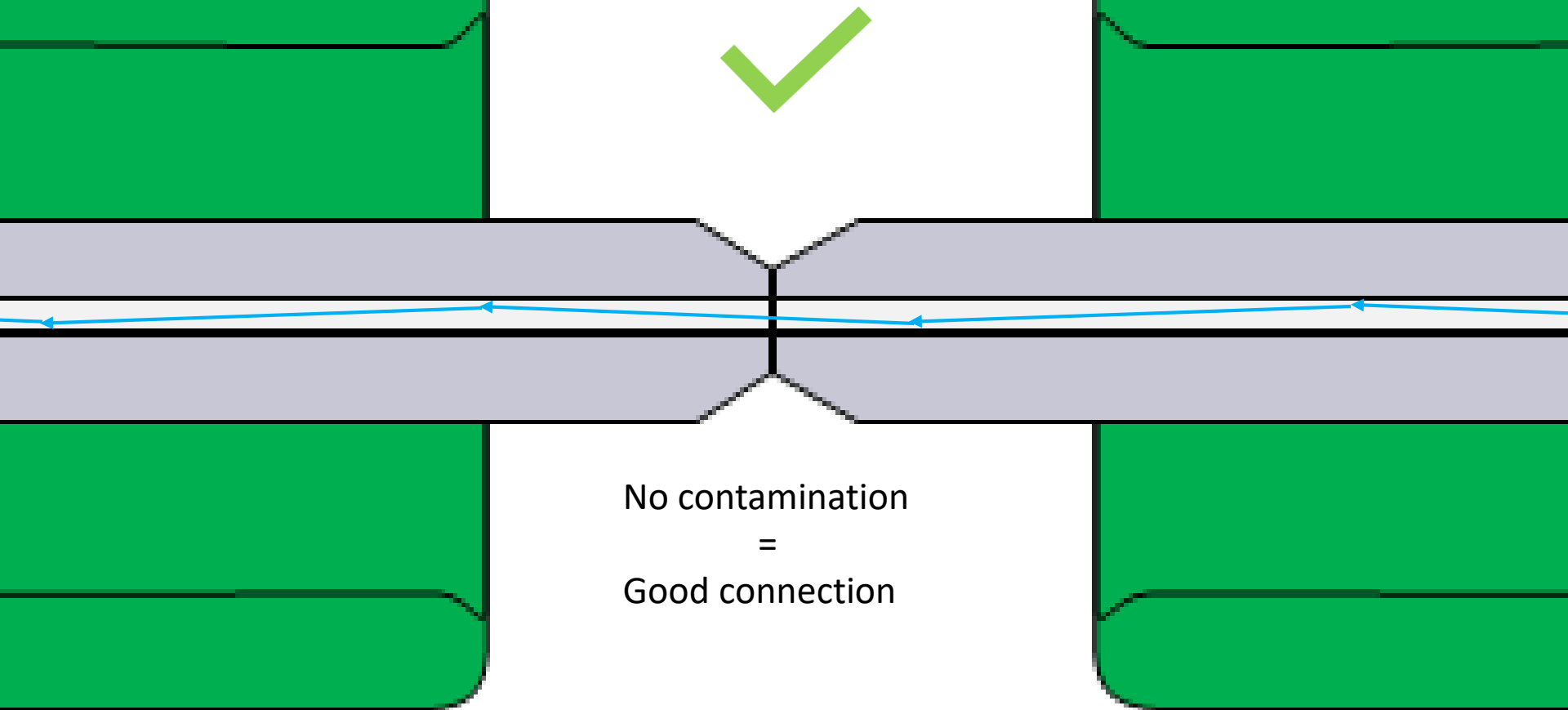




フェルールに 付着するゴミ

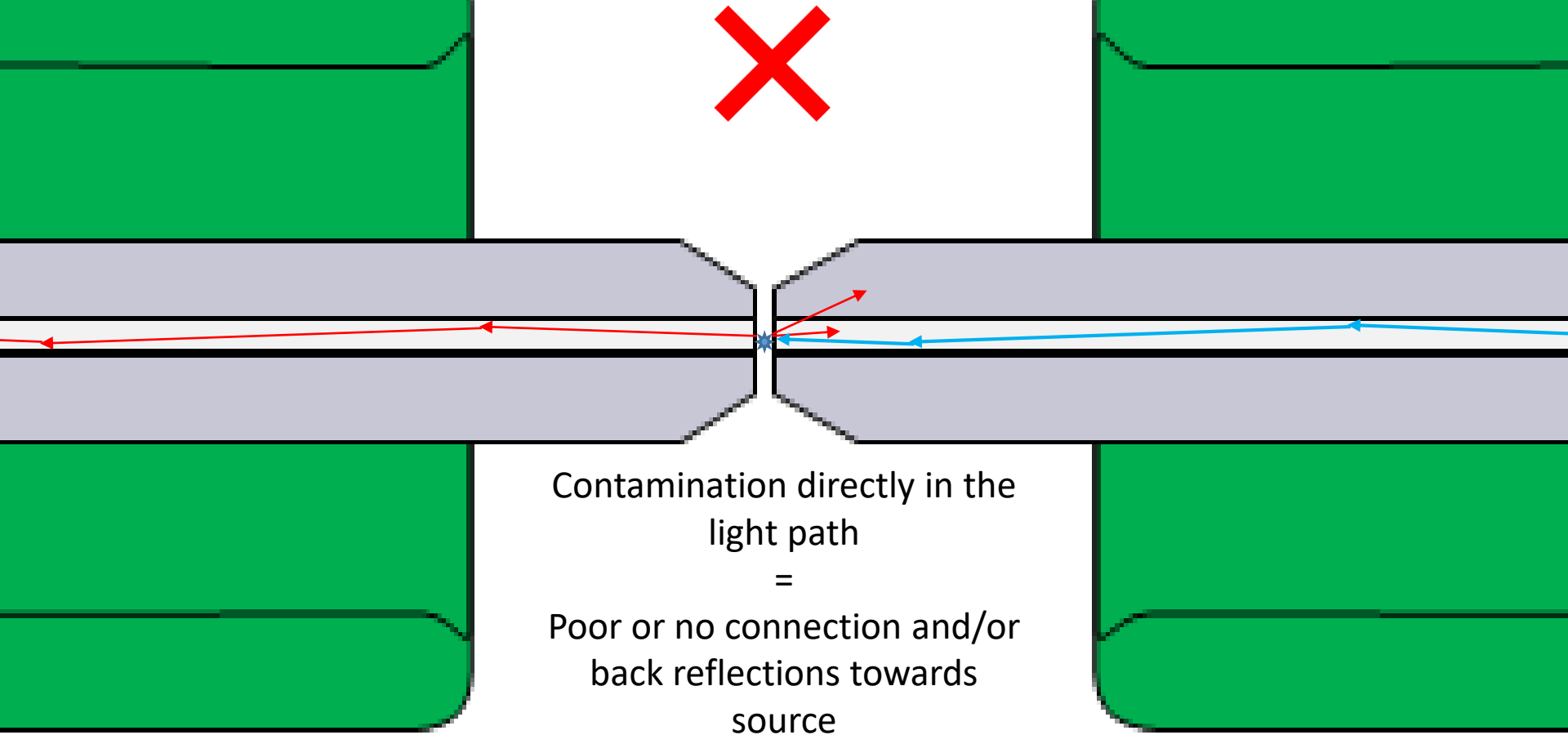
- ほこり
- 汚れた道具・設備
- 手や作業場に残った汚れ
- ダストキャップからの付着

Effects of contamination

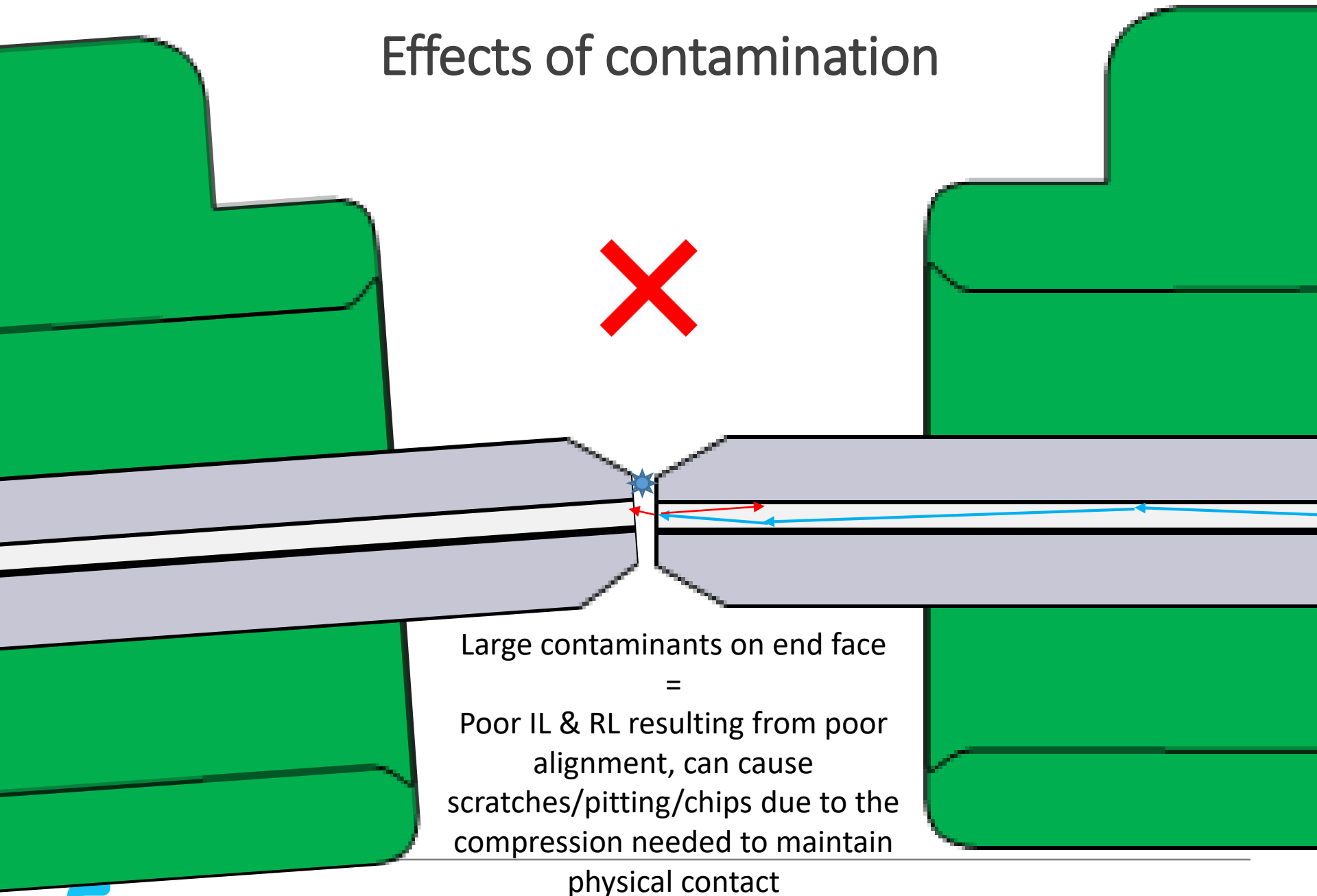


No contamination
=
Good connection

Effects of contamination

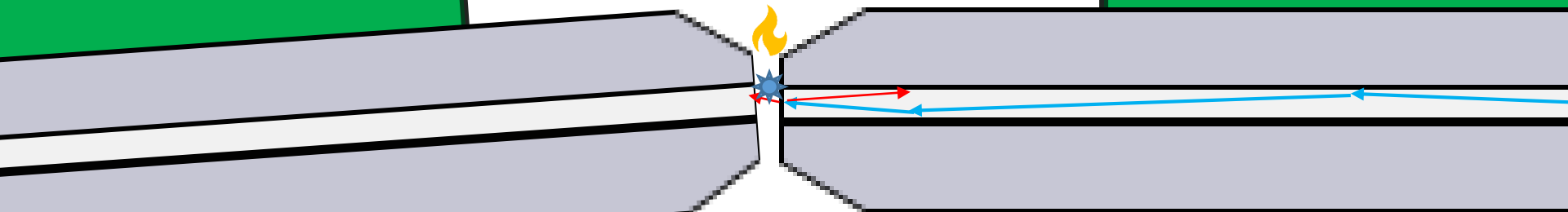


Effects of contamination



Large contaminants on end face
=
Poor IL & RL resulting from poor
alignment, can cause
scratches/pitting/chips due to the
compression needed to maintain
physical contact

Effects of contamination



Large contaminants on end face
=
In a high powered laser (e.g.
100mW or 20dBm) environment
large contamination can cause end-
face burnout – damaging the
connector.

One-Click™ Cleaner family



MU/LC-CLK-C



MU/LC-MINI-CLK-A



SC-CLK-B



SC-MINI-CLK-A



MPO-CLK-D



CS/MDC-CLK-A



SN-CLK-A



DLC-CLK-A



HOC-CLK-A



M250-E-CLK-A



ODC-CLK-A



M20-CLK-A



MTRJ-CLK-A



MT-BP-CLK-A



MPO16-CLK-A

New One-Click™ products



CS/MDC-CLK-A

Application: Cleaning of CS & MDC type connectors which are predominantly used for SFP-DD, OSFP and QSFP-DD transceivers



SN-CLK-A

Application: Cleaning of SN type connectors which are predominantly used for quad style transceiver (QSFP, QSFP-DD, OSFP)



HOC-CLK-A



Application: Cleaning of Fujikura HOC & similar waterproof type connectors which are predominantly used FTTH (drop cables) & 5G base station/medium cell/small cell connectivity



One-Click™ 製品一覧

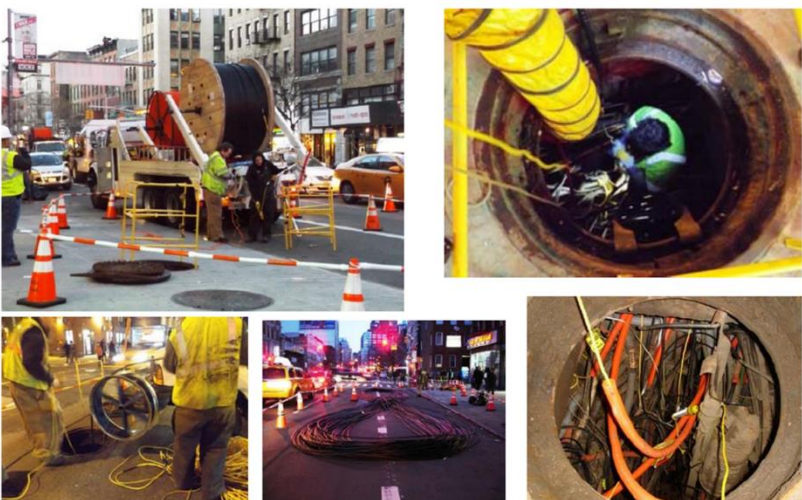
品名	色	ハウジングの色	対象コネクタ			
One-Click Cleaner SC	緑	白	SC	FC	ST	-
One-Click Cleaner SC Mini	緑	白				
One-Click Cleaner M250	橙	白				
One-Click Ultra Cleaner 2.5	緑	白				
One-Click Cleaner SC/FA	橙	白				
One-Click Cleaner SC/FA Mini	橙	白				
One-Click Cleaner SC/FA-EN	橙	白				
One-Click Cleaner HOC	緑	白		Opti Tap	TITAN/TRIDENT	
One-Click Cleaner MU/LC	青	白	LC		MU	
One-Click Cleaner MU/LC Mini	青	青				
One-Click Cleaner M20	茶	白	SMTPE 304M			
One-Click Cleaner ODC	紫	白	LC	MU	ODC	-
One-Click Cleaner D-LC	青	白	D-LC			
One-Click Cleaner SN Duplex	黄	白	SN			
One-Click Cleaner CS/MDC Duplex	紫	白	CS		MDC	
One-Click Cleaner MT-RJ	茶	白	MTRJ			
One-Click Cleaner MPO	青	白	12,24心MPO			
One-Click Cleaner BNC	青	白	BNC			
One-Click Cleaner MPO-16	紫	白	16心MPO			

清掃工法比較

	One-Click	他社製品	他方式(一例)
			
メリット	<ul style="list-style-type: none">・高品質/高性能・豊富なコネクタ種類に対応・様々なシチュエーションに対応・簡単に清掃可能	<ul style="list-style-type: none">・品質/性能はメーカーによる	<ul style="list-style-type: none">・1本1本が安価
デメリット		<ul style="list-style-type: none">・One-Clickほど多くのコネクタ種類に対応したメーカーはない	<ul style="list-style-type: none">・毎清掃ごとにゴミが出る・清掃に技術が必要・使用する場面が限られる

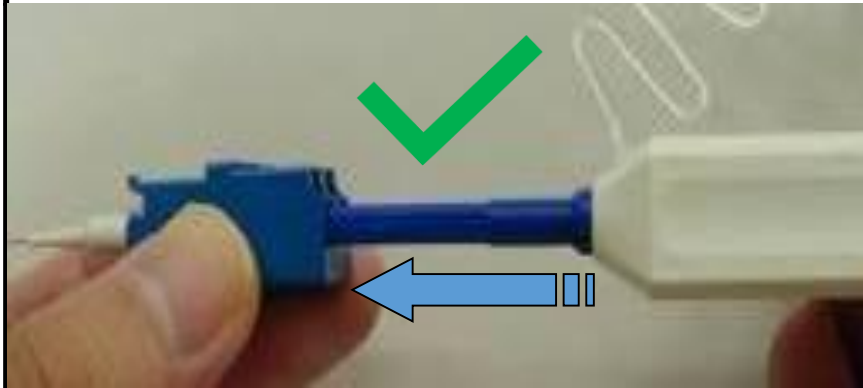


・様々なシチュエーションに対応



使用上の注意

Not to slant One-Click while inserting adapter



In case of slant inserting

